



Green Party

BETTER POLICIES FOR A BETTER FUTURE

Green councillors listen, Green councillors act

Those local communities that have already elected Green councillors have had a pleasant surprise. Your newly-elected Green councillor will:

- Listen to you.
- Work to get your views and frustrations heard at the council.
- Work for more open and fair decision making.
- Be free to act in your interest, not in the interest of a party machine.

Greens are good for your health

Your Green councillor will:

- Fight the threat to close Stroud Maternity Hospital
- 'Keep our NHS public' (including NHS dentists) and support local health service excellence by opposing creeping privatisation and PFIs
- Fight to get mobile phone and 'Tetra' masts located away from people's homes, schools and workplaces
- unless safety concerns are resolved
- Support real local GM-free food in school meals, our shops and markets
- Encourage new and more exciting green playspaces and exercise opportunities
- Support more allotments (such as in Cashes Green, Stonehouse and Chalford)
- Campaign for pure, fluoride-free drinking water.

Green communities are alive and safe

Your Green councillor will:

- Support local services like Post Offices, youth clubs, libraries, shops and buses
- Support schemes that help older people stay in their own homes (like gardening assistance)
- Encourage real community policing (on foot and cycle from local police stations)
- Support a mix of affordable housing types, suitable for different needs – including good quality housing for rent in public ownership.

Your green spaces 'only safe in Green hands'



It was Green councillors who led popular opposition to Nailsworth, Thrupp, the Woodchesters and Stonehouse being made part of the 'Stroud Urban Area' in the local plan – threatening our historic settlements and the green fields that separate them. Greens were outvoted by the combined might of Conservative, Labour and Lib-Dem councillors – against the will of local people. Your Green councillor will:

- Continue to fight for the green spaces between our communities
- Support affordable housing on sites which are appropriate – not just those that make the most money for developers
- Continue to oppose mega-development and ensuing transport chaos in the 'Area of Outstanding Natural Beauty' at Aston Down airfield
- Insist on better litter clearance and more dog-poo bins.

Green councillors have led the fight to save our green spaces.



Clare Sheridan outside her energy- and cost-saving house in Stonehouse.

Greens pledge value and fairness in local taxation

Nobody likes paying taxes. Greens pledge to use your hard-earned money fairly and efficiently to benefit those that need it most. Your Green councillor will:

- Oppose Council Tax discounts for second-home-owners, while so many people can't afford even one home
- Resist extravagant pay rises to top-salaried council managers at the expense of lower-paid staff
- Promote efficient use of council resources (such as opposing higher allowances for staff using large, gas-guzzling cars, rather than small cars, bicycles or going on foot).

What a waste!

Stroud recycles 21% of domestic waste (2004/5), while some councils manage 50%. Your Green councillor will:

- Encourage less packaging and more re-use
- Support schemes to make Stroud District a recycling leader
- Help our local businesses to recycle more
- Oppose the introduction of dangerous and inefficient waste incineration.

Green Party
Real Progress

Action to secure a future for our grandchildren

Other political parties are starting to talk about climate chaos and energy security – but where is the action? Some councils, often thanks to elected Green councillors, are taking more action. Your Green councillor will:

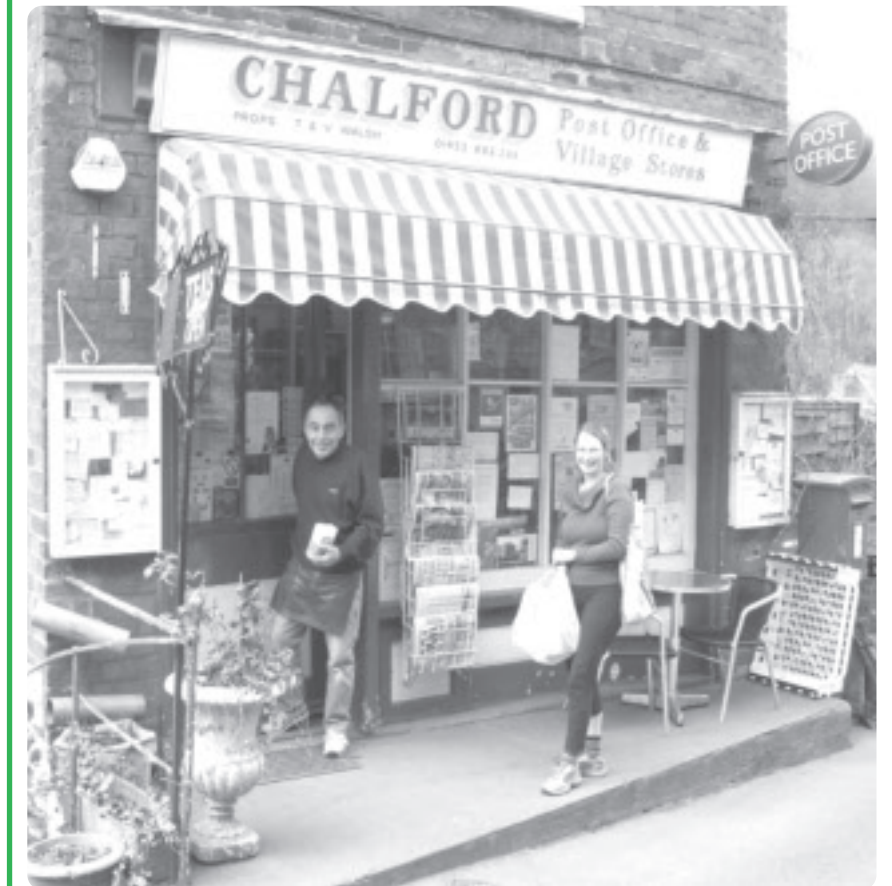
- Save money by promoting investment in energy efficiency
- Encourage local building and planning standards that make homes cheaper to run and more environmentally friendly
- Oppose the building of new nuclear power stations.

Greens save lives

Your Green councillor will support:

- 20 mph limits and enforcement in residential areas (this can reduce casualties by 75%)
- Testing exciting new traffic calming approaches (not involving humps) that have been shown to reduce casualties and congestion
- Targeting money from parking fees to improve public transport
- A safe and efficient transport interchange in Stroud (bus, train, car, bicycle and walking).

Greens mean business

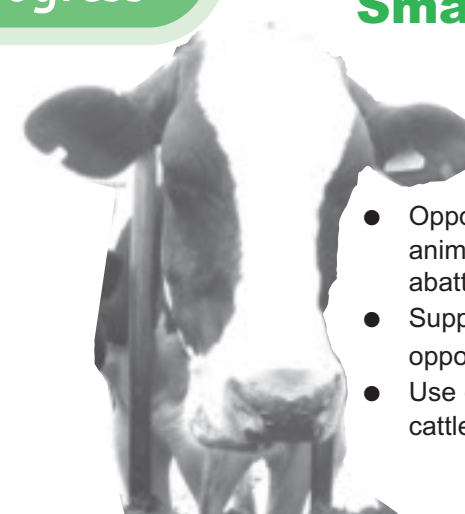


Your Green councillor will support a strong local economy by:

- Encouraging choice by supporting local shops and curbing supermarket monopolies
- Ensuring that local business and local communities benefit

from canal regeneration

- Helping local business to make money from recycling and cutting-edge renewable energy opportunities
- Encouraging farmers' markets, 'Buy Local' and 'Fairtrade'.



Smart animals choose Greens!

They know that Greens have the best policies on animal welfare. Your Green councillor will:

- Oppose cruel, long-distance transport of live animals by promoting local markets and abattoirs
- Support our best local farmers by opposing factory farming
- Use good science to reduce TB in cattle, rather than a massive cull of badgers.

Right: Protesters in Stroud demonstrate against the badger cull.



GREENS ARE GOOD FOR YOU!



Simon Laverack



About **Simon Laverack**...your **Green Party** candidate for Bisley, Eastcombe and Oakridge

It was almost two years ago, when my partner and I first stumbled across the Five Valleys. Like all visitors, we could not help but notice that the countryside was pretty special. However, it was the outgoing and positive vibe we experienced from its locals that began to stir up ideas of leaving our city life (up north) to seek a more fulfilling one here.

Since being a geography undergraduate, I have been a keen advocate of **Green** issues. This area has a wide reputation for its innovative and effective environmentally sensitive measures in addressing the practical needs of its citizens and local community.

Now permanently settled in Bisley, my partner and I share similar vocations as occupational therapists supporting individuals with mental health problems to lead successful lives. It reaffirms to us the importance and benefits of having healthy, vibrant and socially-inclusive communities.

We are fortunate to live in this largely unspoilt landscape. Nevertheless, the **Green Party** will need your support if we are to preserve our inheritance, our green spaces, woods and communities, but also to meet the challenges to come.

I ask you to vote Green, to make a real difference, to put people and the environment first.

Visit our website for more about the many local issues that Simon is involved with:
www.glosgreenparty.org.uk



YOUR PLANET NEEDS YOU!

(Tick if you would like to get more involved)

I could deliver leaflets, display a poster, or help in some other way.

I would like to make a donation – to create real progress.

I would like to talk to someone to learn more about the Green Party.

I have a suggestion:
.....
.....

Name: Tel: Email:


Address:

Contact: John Marjoram, 8 Castle St, Stroud, GL5 2HP.
Tel: 01453 750962 or email: elections@glosgreenparty.org.uk
For more information visit: www.glosgreenparty.org.uk

Printed by SEVERNPRINT, Ashville Industrial Estate, Gloucester. The Gloucestershire Green Party would like to thank Severnprint, who operate using renewable energy and on-site waste management and recycling practices; use eco-friendly transport and donate to Tree Aid projects in Ghana.

District Council Election Communication from the Green Party

FOR REAL PROGRESS: VOTE SIMON LAVERACK


Vote for **Simon Laverack** 
for Bisley, Eastcombe and Oakridge
Thursday MAY 4th.



Dear Voter,
If you elect me as your green councillor I will:

- ✓ work with the parish council to ensure that Bisley has its fair share of district funds to achieve local projects
- ✓ work to ensure that fullest consultation on planning issues is achieved with the district council and that there is an appropriate balance between countryside, housing and economy
- ✓ work on traffic dangers – to reduce speed, enhance clear signage, bring down the number of unsuitable lorries through our villages and support the safety of children, pedestrians, horse riders and cyclists on our rural roads
- ✓ work to conserve the beauty of our rural environment – its landscape, trees, and wildlife
- ✓ work to make sure that essential village services, such as shops and post offices, are encouraged
- ✓ listen to all residents and see that issues that concern you are dealt with as quickly as possible.

Every vote counts – don't waste yours.



Simon Laverack
– I look forward to hearing from you.



Message from Lesley Green

"I met Simon, his partner Hayet and baby Jessica when they first moved into Bisley last year. They are newcomers to the area, but bring with them a freshness, energy and commitment to a new community that we will all benefit from. I am confident that if Simon is elected he will work hard for us all; more particularly defend our local distinctiveness with vigour.

I am very pleased to be supporting Simon in this election."



Lesley Green represented Bisley-with-Lypiatt as District Councillor 1994–2002

Simon Laverack, 71 Windy Ridge, Bisley. Tel: 770846 Email: simonlaverack@yahoo.co.uk